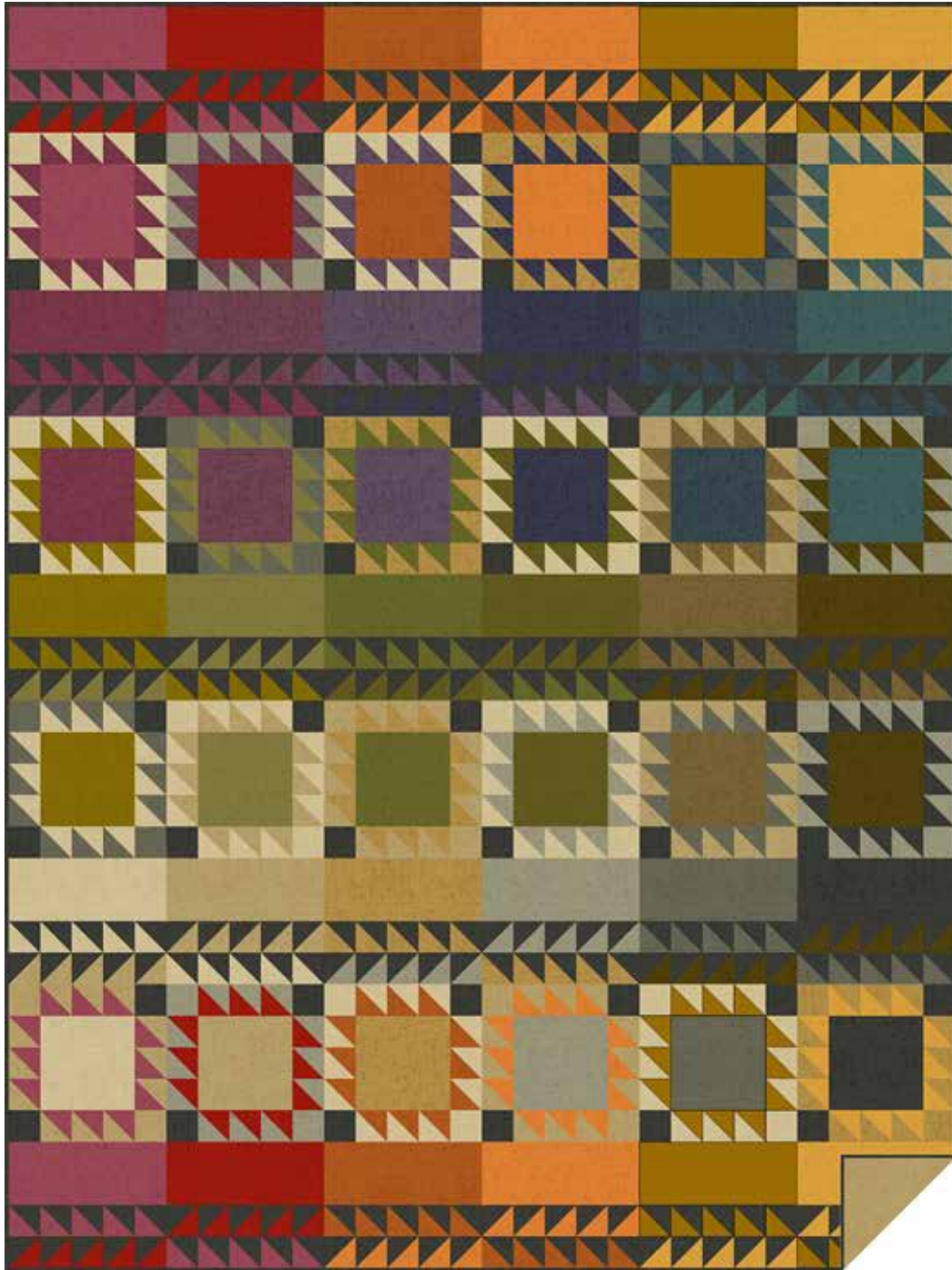


# Cottage Cloth

RENÉE NANNEMAN



100  
*years*



Aritsan Blanket Quilt designed by: **Renée Nanneman**  
Quilt Size: **60" x 80"** • Skill Level: **Experienced Beginner**

andover

•  
•  
• [makower.uk](http://makower.uk)  
•

Free Pattern Download Available

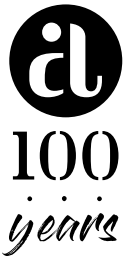
1384 Broadway New York, NY 10018  
Tel. (800) 223-5678 • [andoverfabrics.com](http://andoverfabrics.com)

3/15/22

# Artisan Blanket Quilt

Introducing Andover Fabrics new collection: COTTAGE CLOTH by Renée Nanneman

Quilt designed by Renée Nanneman



Quilt finishes 60" x 80"

24 Blocks: 10" x 10"

*Two-tone Flying Geese and a rich palette make this a winning combination. Attention to fabric placement will result in the intriguing color shifts. The size is perfect for taking a nap in the autumn sun. Easy to piece, you will be finished with this beauty in no time.*

## Cutting Directions

**Note:** Read assembly directions before cutting patches. All measurements are cut sizes and include 1/4" seam allowances. A fat 1/4 is an 18" x 20"-22" cut. WOF designates the width of fabric from selvedge to selvedge (approximately 43" wide).

### Cutting for One Block:

Fabric 1: Cut (1) 6 1/2" center square

Fabric 2: Cut (6) squares 3" or 2 7/8" for HST  
(Read Step 1 first.)

Fabric 3: Cut (6) squares 3" or 2 7/8" for HST  
Cut (2) corner squares 2 1/2"

Fabric X: Cut (2) corner squares 2 1/2"

### Cutting for ONE Sash

Fabric 1: Cut (3) squares 3" or 2 7/8" for HST

Fabric 2: Cut (3) squares 3" or 2 7/8" for HST

Fabric X: Cut (6) squares 3" or 2 7/8" for HST

### Cutting for Quilt:

**6 Fat 1/4** From each:

Cut (1) square 6 1/2"

Cut (2) rectangles 4 1/2" x 10 1/2"

Cut (16) squares 3" (or 2 7/8")

(Read Step 1 before cutting.)

**11 Fat 1/4** From each:

Cut (1) square 6 1/2"

Cut (1) rectangle 4 1/2" x 10 1/2"

Cut (11) squares 3" (or 2 7/8")

### Fabric R

Cut (1) square 6 1/2"

Cut (1) rectangle 4 1/2" x 10 1/2"

Cut (16) squares 3" (or 2 7/8")

**Note:** The alphabet labels refer to the labels on the Quilt Diagram and the fabric thumbnail sheet on page 5.

## Fabric Requirements

		Yardage
<b>6 Fat 1/4</b>	set	fat 1/4 each
A, B, C, D, E, F		
<b>11 Fat 1/4</b>	set	fat 1/4 each
G, H, I, J, K, L, M, N, O, P, Q		
<b>Fabric R</b>	Set	fat 1/4
<b>Fabric S</b>	Set	3/4 yard
<b>Fabric T</b>	Set	3/4 yard
<b>Fabric U</b>	Set	1/2 yard
<b>Fabric V</b>	Set	1/2 yard
<b>Fabric W</b>	Set	1/2 yard
<b>Fabric X</b>	Set	1 1/2 yards
<b>Binding</b>		5/8 yard 428-K
<b>Backing</b>		5 yards 425-N

### Fabric S

Cut (1) square 6 1/2"

Cut (1) rectangle 4 1/2" x 10 1/2"

Cut (59) squares 3" (or 2 7/8")

Cut (16) squares 2 1/2"

### Fabric T

Cut (1) square 6 1/2"

Cut (1) rectangle 4 1/2" x 10 1/2"

Cut (47) squares 3" (or 2 7/8")

Cut (12) squares 2 1/2"

### Fabric U

Cut (1) square 6 1/2"

Cut (1) rectangle 4 1/2" x 10 1/2"

Cut (29) squares 3" (or 2 7/8")

Cut (6) squares 2 1/2"

### Fabric V

Cut (1) square 6 1/2"

Cut (1) rectangle 4 1/2" x 10 1/2"

Cut (35) squares 3" (or 2 7/8")

Cut (8) squares 2 1/2"

### Fabric W

Cut (1) square 6 1/2"

Cut (1) rectangle 4 1/2" x 10 1/2"

Cut (29) squares 3" (or 2 7/8")

Cut (6) squares 2 1/2"

### Fabric X

Cut (1) square 6 1/2"

Cut (1) rectangle 4 1/2" x 10 1/2"

Cut (156) squares 3" (or 2 7/8")

Cut (48) squares 2 1/2"

### Binding

Cut (8) strips 2 1/2" x WOF  
for binding

### Backing

Cut (2) lengths 34" x 88",  
pieced to fit quilt top  
with overlap on all sides

## Making the Quilt

1. Refer to the Quilt Diagram for fabric combinations and placement. The blocks and sashes are made with half-square triangles (HST). Use your favorite method to make HST that finish  $2\frac{1}{2}$ ", or follow these directions. Fabric squares cut 3" will be trimmed after stitching. Cut the squares  $2\frac{7}{8}$ " if you do not wish to trim later. Draw a diagonal line on the wrong side of a light 3" square. With right sides together, position the marked square on top of a second darker square. Stitch  $\frac{1}{4}$ " on each side of the diagonal line. Cut apart on the drawn line. Press the seam allowance toward the darker fabric. Trim the squares to  $2\frac{1}{2}$ " if needed. Make the number of HST in the colors needed for each block or sash, referring to the following directions.
2. Block: Refer to the Quilt Diagram to make 12 HST in the color combinations for each block. Arrange 12 HST, the  $6\frac{1}{2}$ " center square, and the corner squares to make each block. Notice that every block has 2 Fabric X patches in opposite corners. Make 24 blocks.
3. Sash Unit: When you make the HST following the cutting for one sash, there will be an extra HST of each color combination. Use the extra HST in another sash. Make HST for each Sash Unit in the combinations indicated on the Quilt Diagram. Arrange the HST as shown, paying attention to the orientation of the patches, and then join them to make 15 Sash Unit A and 15 Sash Unit B.
4. On a design wall or large flat surface, position the blocks, sashes, and  $4\frac{1}{2}$ " x  $10\frac{1}{2}$ " rectangles into horizontal rows as shown in the Quilt Diagram. Stand back and compare your quilt with the quilt photograph. Once you are satisfied with the design, join the parts into rows, and then join the rows.

## Finishing the Quilt

5. Layer the quilt with batting and backing and baste. Quilt in the ditch around patches. Quilt the center squares in blocks as desired. Bind to finish the quilt.

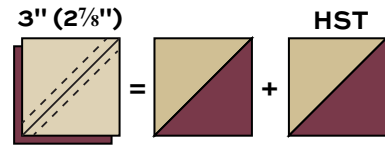


Diagram 1 – Make 12 per block

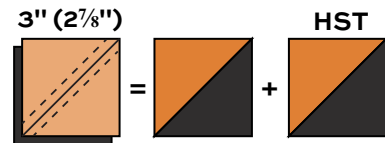
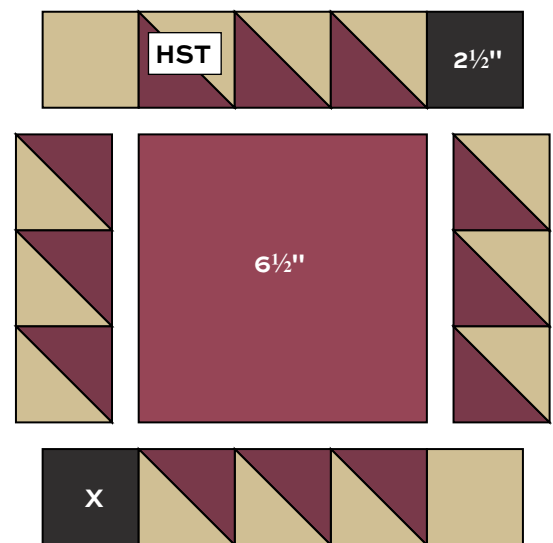


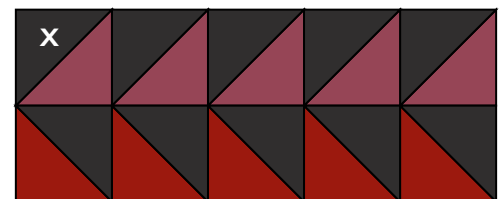
Diagram 2 – Make 10 per sash unit



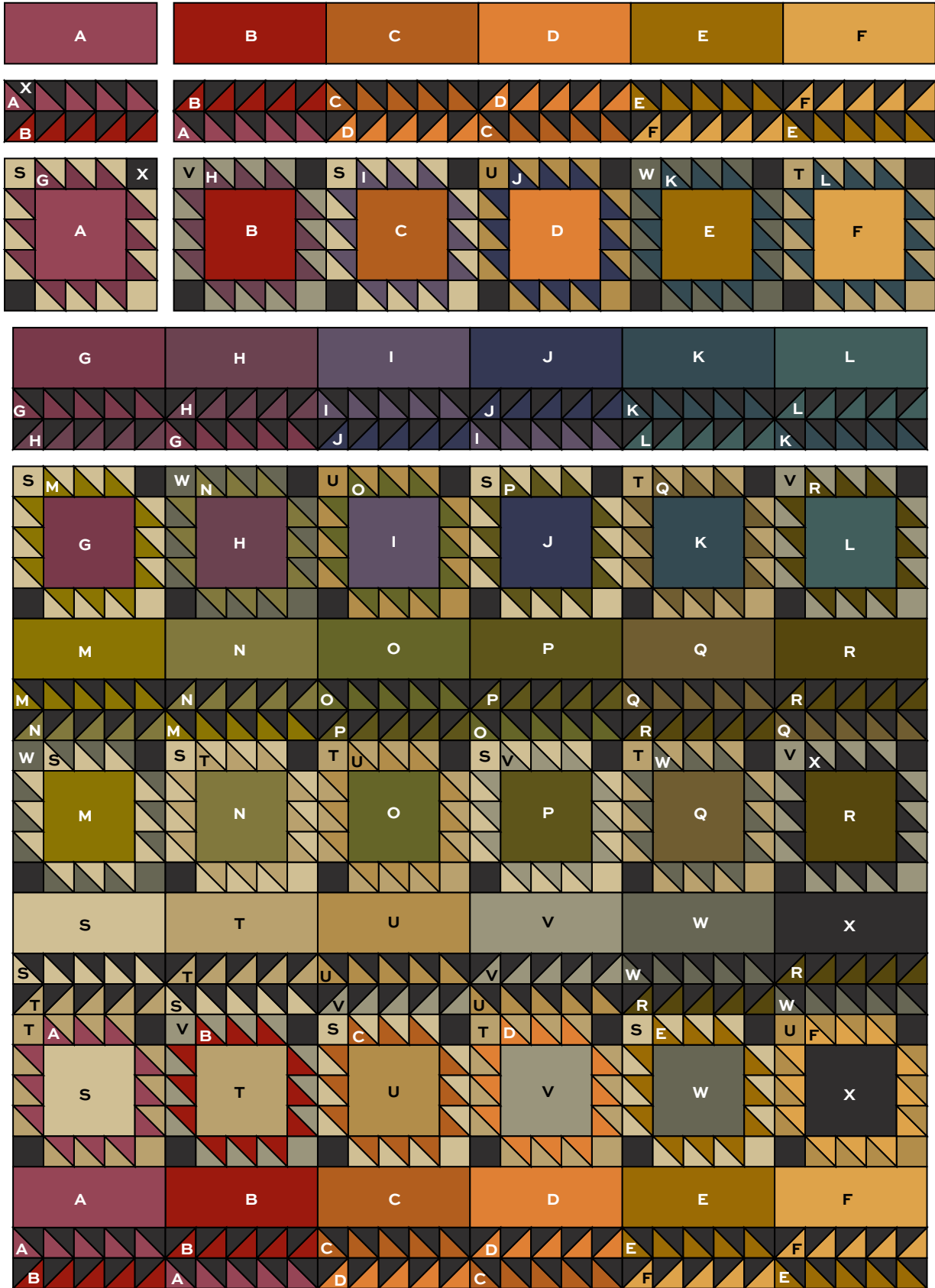
Block – Make 24



Sash Unit A – Make 15



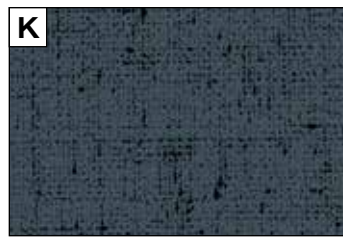
Sash Unit B – Make 15



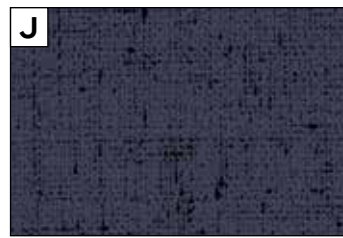
Quilt Diagram

# Cottage Cloth

RENÉE NANNEMAN



428-B Fat ¼



428-B1 Fat ¼



428-C ½ yard



428-C1 ½ yard



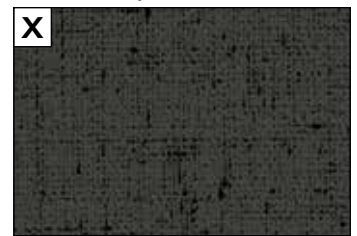
428-G Fat ¼



428-G1 Fat ¼



428-G2 Fat ¼



428-K 1½ yards



428-L ¾ yard



428-N ¾ yard



428-N1 Fat ¼



428-N2 Fat ¼



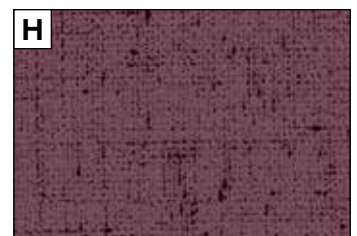
428-O Fat ¼



428-O1 Fat ¼



428-P Fat ¼



428-P1 Fat ¼



428-R Fat ¼



428-R1 Fat ¼



428-R2 Fat ¼



428-T Fat ¼



428-V Fat ¼



428-Y ½ yard



428-Y1 Fat ¼



428-Y2 Fat ¼

All fabrics are used in quilt pattern. Fabrics shown are 100% of actual size.

andover

•  
•  
• [makower.uk](http://makower.uk)  
•

Free Pattern Download Available

1384 Broadway New York, NY 10018

Tel. (800) 223-5678 • [andoverfabrics.com](http://andoverfabrics.com)

3/15/22